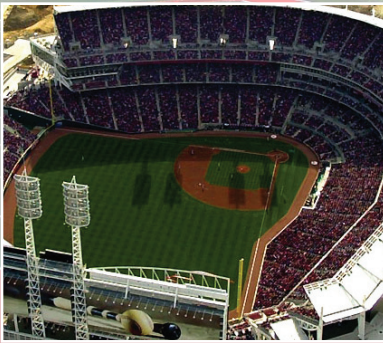


***Watson
Bowman
Acme***

Watson Bowman Acme Expansion Control Systems for Sports Stadiums and Arenas

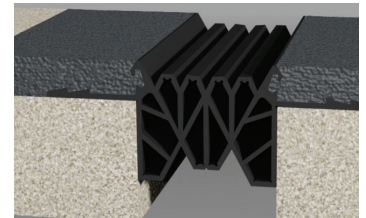
 **BASF**
We create chemistry



The stadium and arena systems available from Watson Bowman Acme do more than just ensure the necessary leeway for movement between rigid elements. They also protect the entire structure and thereby ensure its sustainability, while at the same time meeting the high aesthetic and functional demands of the project.

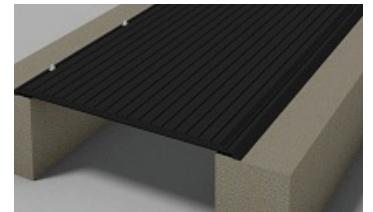
Wabo@CreteMembrane

Wabo@CreteMembrane is the industry's original and most specified elastomeric concrete system. It is a high performance joint sealing system specifically designed to meet the unique demands of parking and stadium structures.



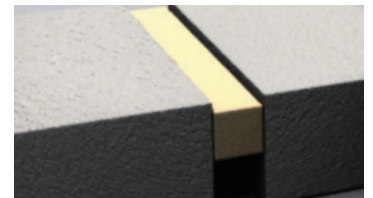
Wabo@SafetyFlex

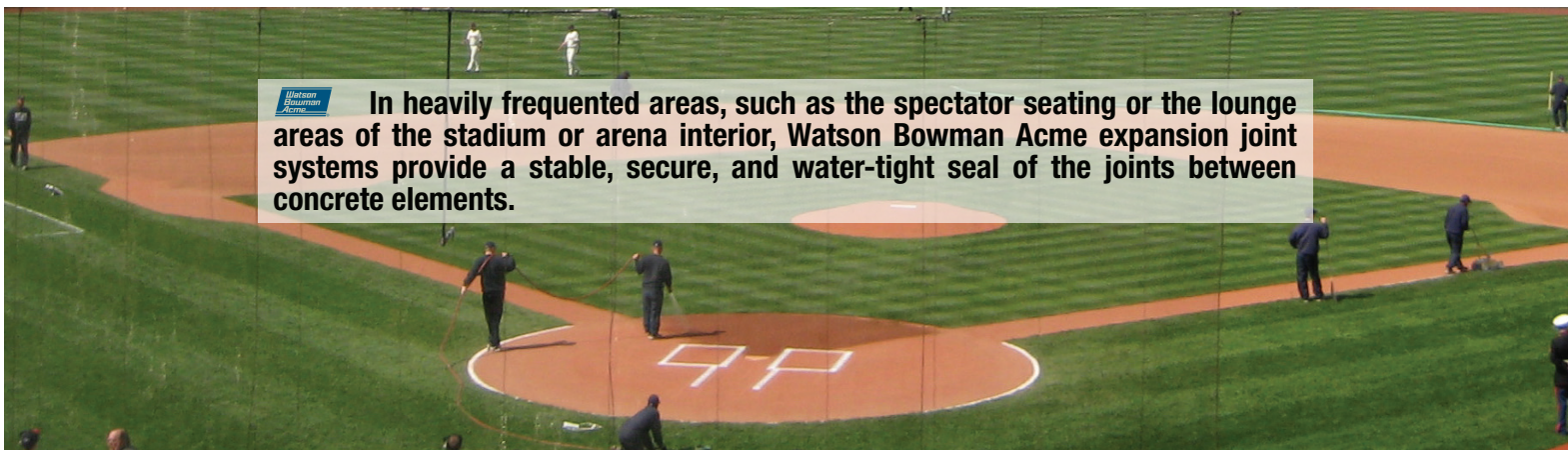
A truly innovative and one-of-a-kind system, the Wabo@SafetyFlex (United States Patent No 6.751.918.) is an elastomeric hinged cover system that is ideal for pedestrian walkway areas as well as in low-speed vehicular traffic areas. Independent metal plates integral to the rubber cover allows the system to flex in response to changes in vertical displacement between opposing slabs. The system can be surface mounted or recessed and can be provided in select colors.



Wabo@Evazote UV

Wabo@Evazote UV is preformed low density closed cell joint seal that is bonded into place with a two component 100% solids modified epoxy adhesive. Wabo@Evazote has a working movement range of 60% compression, 30% tension and 120% shear. The UV stability of Wabo@Evazote allows the seal to be resistant to abrasion, oxidation, oils, salt and other materials that are spilled on or applied to the surface.

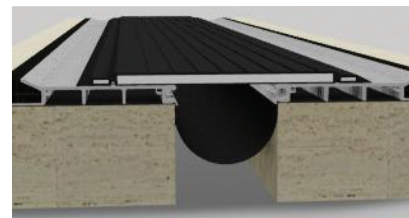




In heavily frequented areas, such as the spectator seating or the lounge areas of the stadium or arena interior, Watson Bowman Acme expansion joint systems provide a stable, secure, and water-tight seal of the joints between concrete elements.

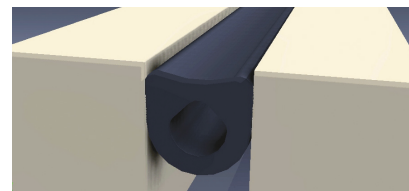
Wabo®Seismic SafetyFlex

The Wabo®Seismic SafetyFlex system is an elastomeric molded cover plate system recommended for wider joint openings exposed to heavy loading or when design considerations call for the ability to accommodate multi-directional seismic movement. Independent metal plates integral to the rubber cover, allows the system to flex in response to changes in vertical displacement between opposing sides of the expansion joint.



Wabo®InverSeal

Wabo®InverSeal is a preformed, flexible, closed cell neoprene, expanded rubber expansion joint seal. The system is bonded in place with a specially formulated two-component epoxy adhesive providing water tightness throughout the entire joint area.



Jeene®

Jeene® is a patented structural sealing joint system comprised of a neoprene profile, which is air-pressurized and bonded in place with a specially formulated epoxy adhesive. When properly installed, the high performance Jeene® joint system will not tear away, protrude out of, or slip from its original position when exposed to repeated mechanical or thermal movements.



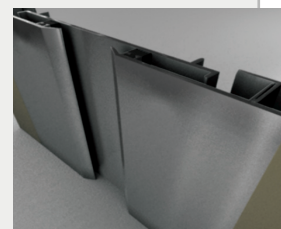
Contact WBA for a full assessment of your expansion joint needs. A complete line of systems available to meet your project needs is available at wbacorp.com



In areas where aesthetics are paramount, such as the VIP boxes or suites, Wabo®Contour and Wabo®Allure expansion joint systems ensure smooth, almost invisible transitions in the wall, ceiling and floor areas. Because architectural finishes often require different colors and surfaces, these systems are the perfect fit for a variety of uses, and do not stand out visually.

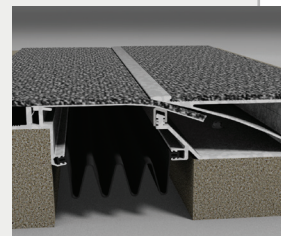
Wabo®Contour II

Wabo®Contour II is a wall and ceiling expansion control system capable of following complex directional changes, as well as, integrating with a variety of wall and ceiling surface treatments. Contour II is available in clear or color anodized aluminum, brass or stainless steel to create a high end elegant appearance.



Wabo®Allure

Wabo®Allure is the original floor expansion joint system that is nearly invisible to the surrounding area except for a narrow aluminum trim strip. While often imitated, the patented features of the Allure provide the highest quality, service life and performance ability in the marketplace today. Allure accepts flexible floor coverings like carpet and sheet vinyl and can be adjusted on site to receive a range of thickness.

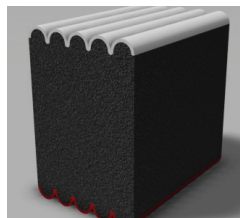




The package for the expansion joints may also include life safety systems. Life safety systems such as fire barriers were developed and tested to guarantee a structure's required fire resistance, minimize the spread of fire or smoke through joints, and accommodate dynamic movement.

Wabo®FireShield FSV/FSH

Wabo®FireShield is a second generation unified fire rated, sound attenuating, UV stable and waterproof sealant system. This fire-retardant impregnated foam does not rely on the silicone face or an intumescent coating to provide its fire rating. There is no drilling or modification of the substrate necessary for installation.



Wabo®FlameGuard II

Wabo®FlameGuard II is a factory assembled fire barrier system that has been designed to provide the required fire endurance rating, minimize passage of smoke and accommodate dynamic movement without stress or degradation to its components. It has been designed and tested to meet the most current building codes and test standards.



Look for Watson Bowman Acme Expansion Joints at your favorite Stadiums and Arenas.
Our products can be found in ballparks, football stadiums and other event arenas throughout North America.

Here is a glimpse of some of the stadiums and arenas where you will find WBA Expansion Joint systems:

Ralph Wilson Stadium - Orchard Park, NY
AT&T Stadium - Arlington, TX
U.S. Bank Stadium - Minneapolis, MN
Folsom Field - Boulder, CO
U.S. Cellular Field - Chicago, IL
Memorial Stadium Lincoln - Lincoln, NE
Mercedes-Benz Stadium - Atlanta, GA
Jordan-Hare Stadium - Auburn, AL
Arrowhead Stadium - Kansas City, MO
Notre Dame Stadium - South Bend, IN
Great American Ballpark - Cincinnati, OH
Miller Park - Milwaukee, WI
Fenway Park - Boston, MA
Sports Authority Field - Denver, CO
PNC Park - Pittsburgh, PA
Aviva Centre - Toronto, ON, CA
Ohio Stadium - Columbus, OH
Heinz Field - Pittsburgh, PA

Rogers Centre - Toronto, ON, CA
Lincoln Financial Field - Philadelphia, PA
Edward Jones Dome - St. Louis, MO
NRG Stadium - Houston, TX
CenturyLink Field - Seattle, WA
United Center - Chicago, IL
Soldier Field - Chicago, IL
Williams-Brice Stadium - Columbia, SC
Nissan Stadium - Nashville, TN
High Point Solutions Stadium - New Brunswick, NJ
FirstEnergy Stadium - Cleveland, OH
Paul Brown Stadium - Cincinnati, OH
Rideau Carleton Raceway - Gloucester, ON, CA
Sun Life Stadium - Miami, FL
Chase Field - Phoenix, AZ
Bank of America Stadium - Charlotte, NC
Progressive Field - Cleveland, OH
Rio Tinto Stadium - Sandy, UT